

LCD MONITOR

USER MANUAL

CONTENT

F.C.C. statement
Important safeguards

Chapter 1 Introduction

1.1 General Information.....	1
1.2 Features.....	1
1.3 Checking List.....	1

Chapter 2 Installation

2.1 Connect your monitor to a computer.....	3
---	---

Chapter 3 Over view of your monitor

3.1 Front Panel over view.....	4
3.2 Rear Panel over view.....	5

Chapter 4 Operation

4.1 Power ON/OFF switch.....	6
4.2 Power indicator.....	6
4.3 Menu features.....	6
4.4 OSD menu.....	7
4.5 Preset modes timing chart.....	10
4.6 Plug and play.....	10

CONTENT

Chapter 5 Technical information

5.1 Signal Connector Pin Assignment.....	11
5.2 Troubleshooting.....	12

FEDERAL COMMUNICATIONS COMMISSION(F.C.C)STATEMENT

This equipment has been tested and found to comply with the limits of a Class B digital device. Pursuant to Part 15 of the FCC Rules. These limits are designed to provide reasonable protection against harmful interference in a residential installation. This equipment generates, uses and can radiate radio frequency energy and, if not installed and used in accordance with the instructions, may cause harmful interference to radio communications. However, there is no guarantee that interference will not occur in a particular installation. If this equipment does cause harmful interference to radio or television reception, which can be determined by turning the equipment off and on, the user is encouraged to try to correct the interference by one or more of the following measures:

1. Reorient/Relocate the receiving antenna.
2. Increase the separation between the equipment and receiver.
3. Connect the equipment into an outlet on a circuit different from that to which the receiver is connected.
4. Consult the dealer or an experienced radio/TV technician for help.

CAUTION:

Changes or modifications not expressly approved by the manufacturer responsible for compliance could void the user's authority to operate the equipment.

IMPORTANT SAFEGUARDS

Warnings::

- . Read all of these instructions.
- . Save these instructions for later use.
- . Unplug this monitor from the wall outlet before cleaning. Do not use liquid cleaners or aerosol cleaners. Use a damp cloth for cleaning.
- . Do not use attachments not recommended by the monitor manufacturer as they may cause hazards.
- . Do not use this monitor near water. For example near a bathtub, washbowl, kitchen sink, or laundry tub, in a wet basement, or near a swimming pool, etc...
- . Do not place this monitor on an unstable cart, stand, or table. The monitor may fall, causing serious injury to a child or adult, and serious damage to the appliance. Use only with a cart or stand recommended by the manufacturer or sold with monitor. Wall or shelf mounting should follow the manufacturer's instructions, and should use a mounting kit approved by the manufacturer.
- . Slots and openings in the cabinet and the back or bottom are provided for ventilation, and to insure reliable operation of the television receiver and to protect it from overheating, these openings must not be blocked or covered. The openings should never be blocked by placing the monitor on a bed, sofa, rug, or other similar surface. This monitor should never be placed near or over a radiator or heat register. This monitor should not be placed in built-in installation such as a bookcase unless proper ventilation is provided.
- . This monitor should be operated only from the type of power source indicated on the marking label. If you are not sure of the type of power supplied in your home, consult your monitor dealer or local power company.
- . This monitor is equipped with a three-wire grounding type plug, a plug having a third (grounding) pin. This plug will only fit into grounding-type power outlet. This is a safety feature. If you are unable to insert the plug into the outlet, contact your electrician to replace your obsolete outlet. Do not defeat the safety purpose of the grounding-type plug.
- . Do not allow anything to rest on the power cord. Do not locate this monitor where the cord will be abused by persons working on it.
- !. Follow all warnings and instructions marked on the monitor.
- !. For added protection for this monitor, when it is left unattended and unused for long periods of time, unplug it from the wall outlet. This will prevent damage to the monitor due to power-line surges.
- !. Do not overload wall outlets and extension cords as this can result into fire or electric shock.
- !. Never push objects of any kind into this monitor through cabinet slots as they may touch dangerous voltage points or short out parts that could result in a fire or electric shock. Never spill liquid of any kind on the monitor.
- !. Do not attempt to service this monitor yourself since opening or removing covers may expose you to dangerous voltage or other hazards. Refer all servicing to qualified service personnel.
- . Unplug this monitor from the wall outlet and refer servicing to qualified service personnel under the following conditions:
 - a. When the power cord or plug is damaged or frayed.
 - b. If liquid has been spilled into the monitor.
 - c. If the monitor has been exposed to rain or water.
 - d. If the monitor does not operate normally by following the operating instructions. Adjust only those controls that are covered by the operating instructions as improper adjustment of other controls, may result in damage and will often require extensive work by a qualified technician to restore the monitor to normal operation.
 - e. If the monitor has been dropped or the cabinet has been damaged.
 - f. When the monitor exhibits a distinct change in performance this indicated a need for service.
- . When replacement parts are required, be sure the service technician has used replacement parts specified by the manufacturer that have the same characteristics as the original parts. Unauthorized substitutions may result in fire, electric shock, or other hazards.
- . Upon completion of any service or repairs to this monitor, ask the service technician to perform routine safety checks to determine that the monitor is in safe operating condition.
- . The socket outlet shall be near the equipment and shall be easily accessible.
- . The power supply cord is used as the main disconnect device.

Introduction

1.1 General Information

This monitor is a high-performance intelligent multi-scan TFT LCD color monitor. It is designed to be compatible with all display modes for 17" inch LCD monitor.

User friendly interface --- the easy and precise OSD control of 4 keys button.
Brief appearance --- multimedia featured in an elegant and compact housing.

Footprint of all round tilting range --- employing sectional positioning ,well balanced in adjustment.

Analog input-plug and play facilities to accept RGB signal .with modulated frame rate control allowing over 20 different input formats.

1.2 Features

- Multi-scanning at horizontal frequencies of 31KHz to 64KHz and vertical frequencies of 60Hz to 75Hz.
- Microprocessor based with OSD (On Screen Display) control.
- Compatible with standard IBM VGA ,extended VGA,super VGA, IBM XGA modes, as well as VESA resolution standards.
- Universal power supply.
- TCO 99 compliant.
- Microsoft windows 95/98 compatible & VESA Display Data Channel (DDC)1/2B compatible.

1.3 Checking List

Please make sure the following items are included with your LCD monitor:

- Your monitor
- AC Adapter
- AC Power cord
- Signal cable

Introduction

If any of these items are missing ,please contact with your dealer for technical support and customer service.

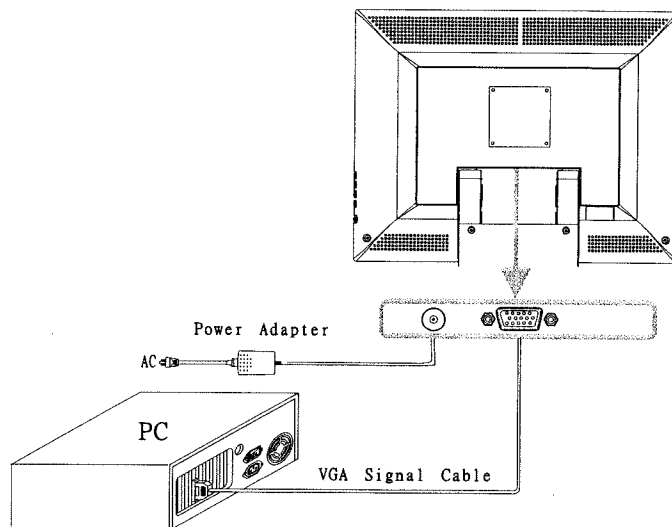
Note:

Be sure to save original box and all packing material for transport in future if the monitor need .

Installation

2.1 Connect your monitor to computer

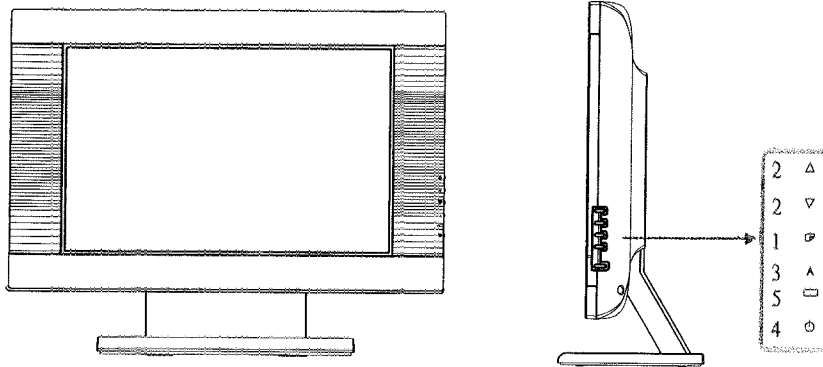
- 2.1.1 Turn off your computer and unplug its power cable.
- 2.1.2 Connect the signal cable to the video port on the back of your computer.
- 2.1.3 Connect the power cable for your monitor to the DC adapter and connect the adapter the DC power jack on the back of your monitor. You must use the supplied adapter.
- 2.1.4 Plug the computer and monitor power cable into a nearby outlet.
- 2.1.5 Turn your computer and monitor on , if your monitor display an image , you have successfully installed the monitor. If the monitor does not display an image ,check all the connections.



Connecting the monitor to the computer and the power supply

Over view of your monitor

3.1 Front Panel over view



1. Menu Button

To push menu button turns on the menu, and it activates the items you highlight .

2. Select Button

To choose which function you need in OSD Menu ,you may click ▲ or ▼

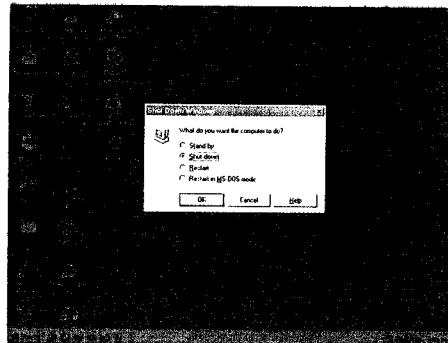
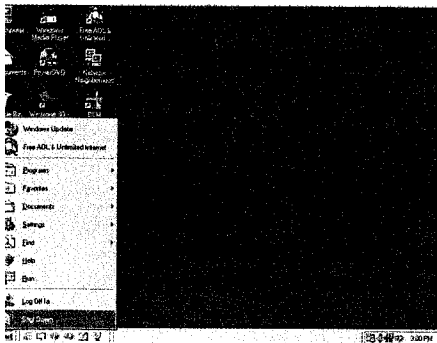
3. Auto Button

Press "A" button 2 seconds the auto adjust display mode will tune to the utmost performance according to VGA setting .

In the event of the display image needs further adjustment .

To ensure best Auto-Adjustment performance,

- a . Attempt to Start/Close Windows page (No need to Shut Off)



Over view of your monitor

- b. Press "A" button 2 seconds.
The monitor display will be then best adjusted.

Remark:

The highest display frequency generates at Close-Windows stage (on-off graphics pattern). Per recommended processes facilitate to best Auto-Adjustment under default environment.

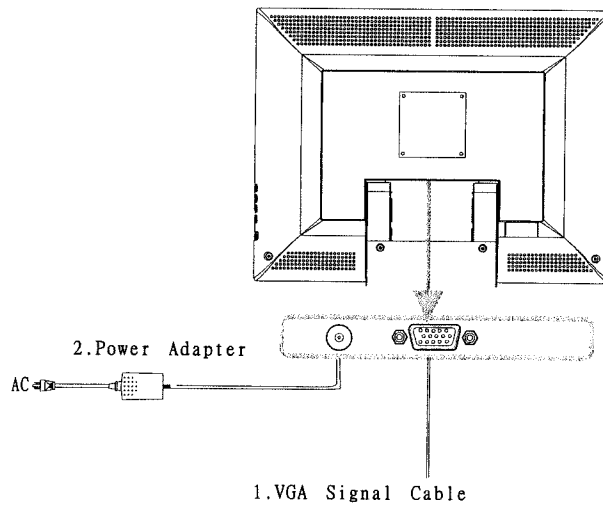
4. Power Button

Use this button to turn the monitor on and off

5. Power indicator

This light glows green during normal operation and glows orange during power off. Glows orange and flash during power saving mode.

3.2 Rear panel over view



1. Signal cable

Connect your signal cable to PC.

2. Power jack

Connect adapter power output cable here

OPERATION Direct - Access Features

4.1 POWER ON/OFF SWITCH

This button is used to turn the monitor on and off.

4.2 POWER INDICATOR

This indicator lights up green when the monitor operates normally, if the monitor is in power saving mode, this indicator change to orange and flash when monitor is turn off, this indicator change the color to orange.

4.3 MENU FEATURES

The following features can all be accessed using your monitors on screen menu system. Once are finished. Making adjustments to a feature, pushing the exit button to turn off the menu.

Please follow the procedure of selection and adjust an item using the OSD system as below steps for main functions adjustment.

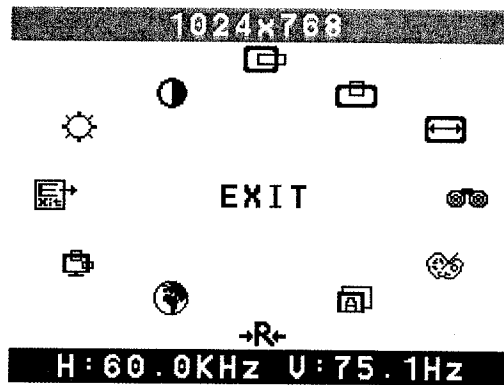
- Step1.** Press <Menu Button> to activate the OSD menu.
- Step2.** Press <Select Button ▲> or <Select Button ▼> to scroll the highlight through the main function list.
- Step3.** When the desired function is highlight, press Menu Button a second time, the sub-menu(second page) will appear nearby main menu.
- Step4.** Press Menu Button and release again, the highlight of adjusted items and scroll bar will change the color .
- Step5.** To make your adjustment , press ▲ or ▼ clockwise to increase or counterclockwise to decrease the setting.
- Step6.** Press and release Menu Button again to store the change. the scroll bar will change the color. You can select other function to make adjustment by ▲ or ▼ . Also you can select EXIT icon and press Menu Button again to go back main Menu.

Step7. Repeat step 2 through 6 to make further adjustments.

4.4 OSD MENU

1. Main menu

OSD main menu of controls gives you an overview of the selection of controls available. When you want to make adjustment of the screen Image , press and release button Menu




2. OSD Adjustment


You can choose where you would like OSD image to appear on your screen.


H-Position : 

To move the OSD image horizontally left or right.

V-Position : 

To move the OSD image vertically up or down.

Exit : 
To exit the sub menu

3. Language 

You can choose one of the seven language you need.

4. Reset 

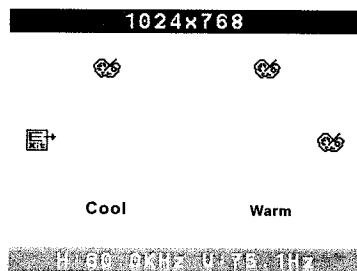
Reset the currently highlighted control to the factory setting . User must be using factory preset video mode to use this function.

5. Auto 

Auto adjust the display mode to its utmost performance according to VGA setting.

6. Color Select 

Color Select Menu



Select user mode 

User color you can adjust to individual color gum intensity by yourself. Increase or decrease red .green or blue depending upon Which color is selected .

Cool

This control adjusts the color temperature of the screen image this item are preset by factory , you can not adjust these setting. The performance is bluer and brighter.

Warm

The performance is redder and closer to paper white.

7. Phase

To improve focus clarity an image stability.

8. H. Size

To increase or decrease the horizontal size of image.

9. V. Position

To move the picture image vertically up or down.

10. H. Position

To move the picture image horizontally left or right.

11. Contrast

Adjust the image brightness in relation to the background.

12. Brightness

Adjust the overall image and background screen brightness.

4.5 Preset Modes Timing Chart

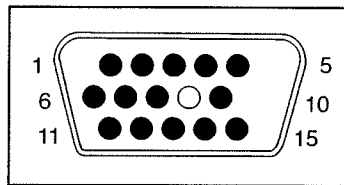
Resolution	Horizontal	Vertical
720X400	31.47KHz	70Hz
640X480	31.47KHz	60Hz
640X480	37.86KHz	72.8Hz
640X480	37.5KHz	75Hz
800X600	37.88KHz	60.3Hz
800X600	48.08KHz	72.2Hz
800X600	46.87KHz	75Hz
1024X768	48.36KHz	60Hz
1024X768	56.48KHz	70.1Hz
1024X768	60.02KHz	75Hz
1280X1024	63.98KHz	60.02Hz

4.6 Plug and Play

This monitor features the VESA DDC (Display Data Channel) standard which, when used with a DDC compatible video card, will simplify the monitor's set up. With VESA DDC 1/2B, when the monitor is powered up, it will automatically notify a Windows 95/98 Host computer of its scanning frequencies, capabilities and characteristics. Windows 95/98 will automatically recognize the connection of the monitor and select the appropriate display resolution.

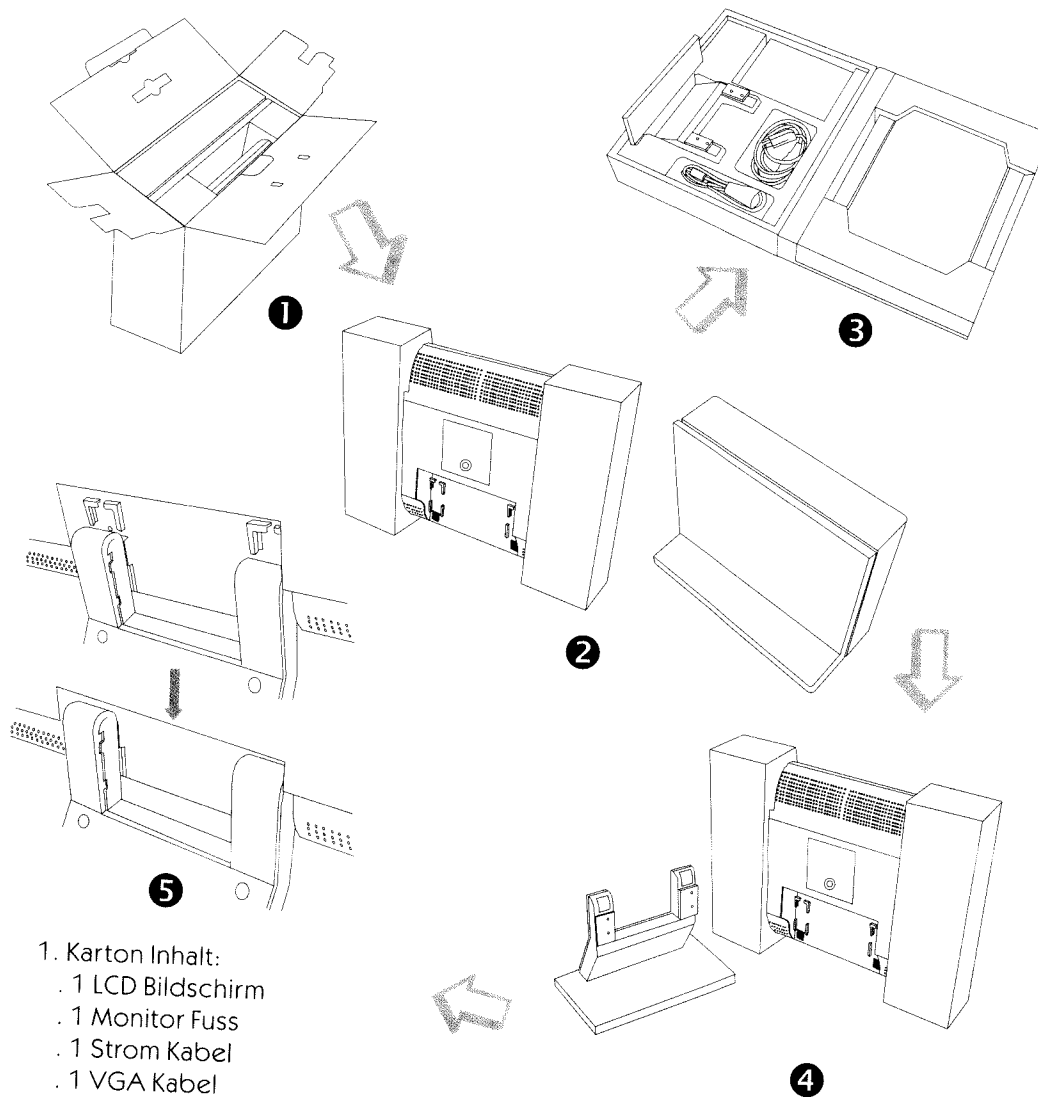
5.1 Signal connector pin assignment

PIN	Signal (D-sub)	PIN	Signal (D-sub)
1	Red	9	No connection
2	Green	10	Ground
3	Blue	11	Ground
4	Ground	12	SDA (FOR DDC)
5	Self Test	13	H. Sync
6	Red Ground	14	V. Sync
7	Green Ground	15	SCL (FOR DDC)
8	Blue Ground		



Signal connector

565/765/865 Montageinformation für LCD Monitor



1. Karton Inhalt:
 - . 1 LCD Bildschirm
 - . 1 Monitor Fuss
 - . 1 Strom Kabel
 - . 1 VGA Kabel
 - . 1 Handbuch und 1 Garantiekarte

- 2+3. Packen Sie den Monitorfuss und den LCD Bildschirm aus der Umverpackung raus.
4. Sentence Stellen Sie den Monitorfuss , auf eine gerade Fläche und nehmen sie den Bildschirm vorsichtig aus dem styropor.
5. Befestigen Sie den LCD Bildschirm am Fuss, indem Sie die Bildschirmrückseite in die Halterungen des Fusses schieben. Stellen Sie sicher, dass der Bildschirm sicher im Fuss eingerastet ist.

Visual Inspection

Defect Type	Accept	Reject
Bright dot		
Random	$N \leq 3$	$N > 3$
two adjacent	$N \leq 1$	$N > 1$
Dark dot,		
random	$N \leq 4$	$N > 4$
two adjacent	$N \leq 2$	$N > 2$
three or more adjacent	Not allowed	
Maximum allowable number of dot defect	$N \leq 5$	$N > 5$
Minimum distance between defects,		
bright dot-to-bright dot	$L \geq 15\text{mm}$	$L < 15\text{mm}$
dark dot-to-dark dot	$L \geq 5\text{mm}$	$L < 5\text{mm}$

[L: length, N:count]

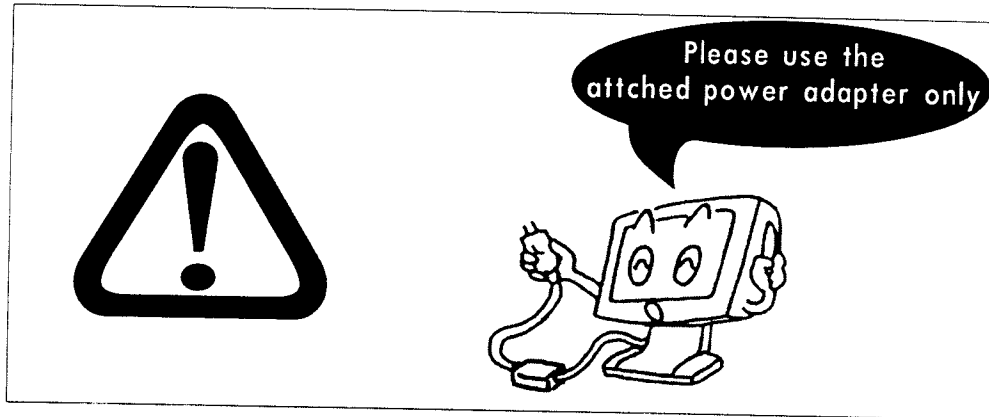
Inspection pattern for electrical defect should be pure R,G,B, Black and White.

Light leakage not allowed

Image sticking image sticking pattern shall not be to persist longer than 10 seconds in the next pattern

Glue/stain/dirt glue, non-removable stain and dirt which are visible in the inspection area are not acceptable.

WARNING



Use attached power adapter only!

Please use attached power adapter and accessory with your LCD monitor, others will cause damage to the LCD monitor.

002-S01-PTI